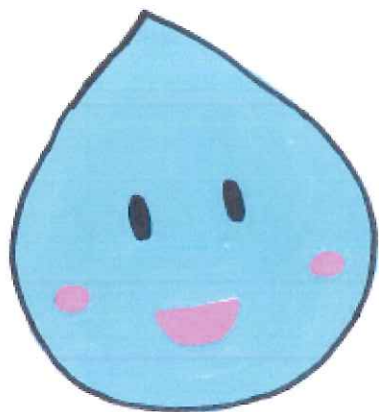


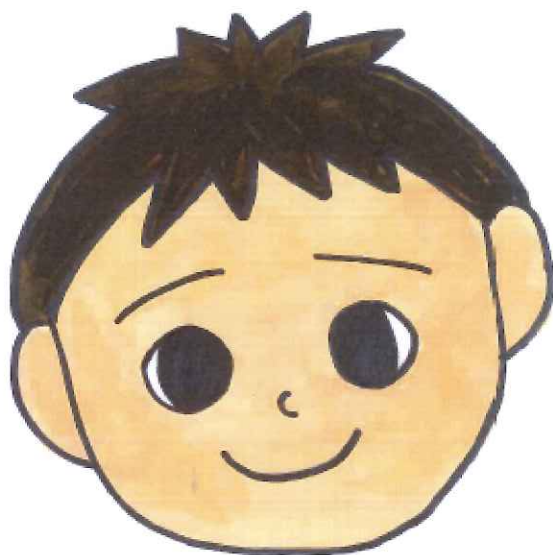
Asahidaki waterfall in our town



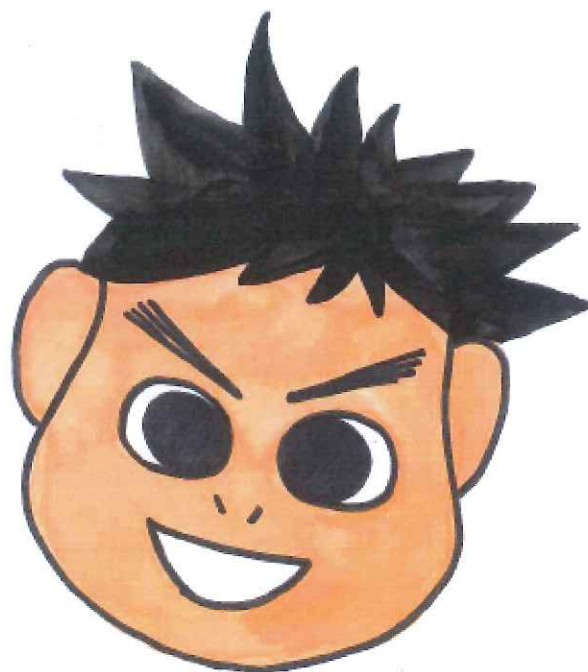
Izu City
Shuzenji Higashi Elementary School



I'm Asappi the fairy of Asahidaki waterfall.
Do you know about Asahidaki waterfall
in our town?



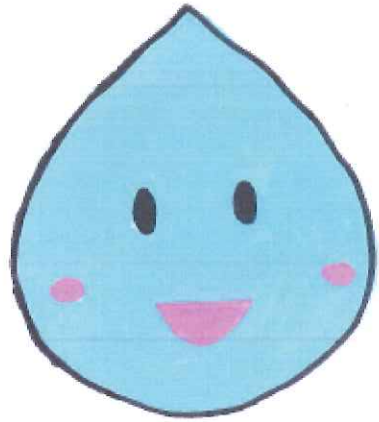
Yeah, I know.
It's in Odaira Izu city.



It's a rocky waterfall.



It's near
Route 136.



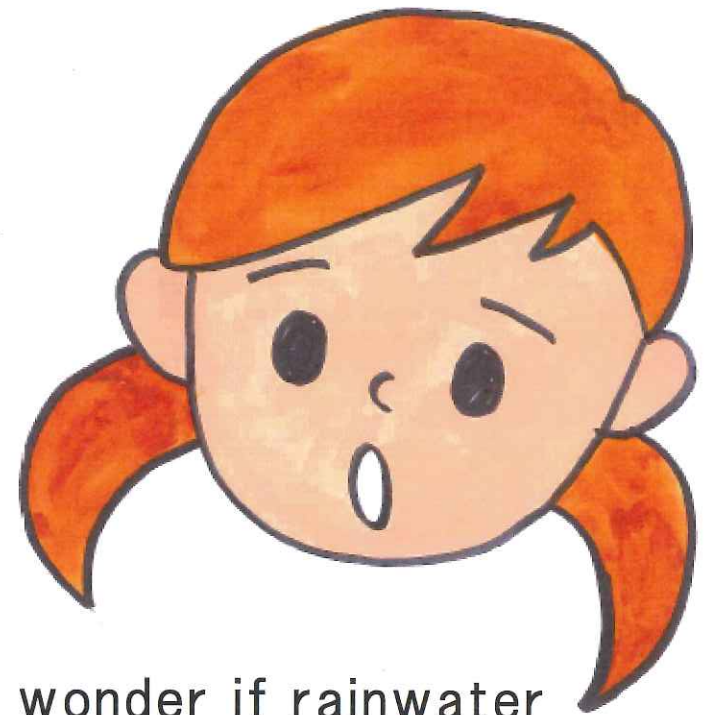
Then, when was Asahidaki waterfall created?
Who loaded the rugged rocks?
Where does the water of the waterfall come from?



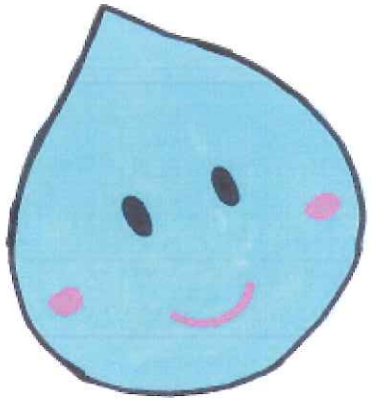
Well. When?



Did my grandpa
load it?



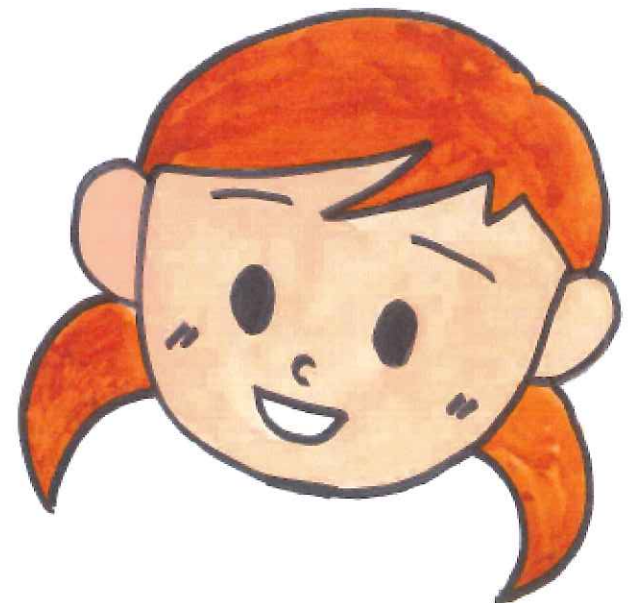
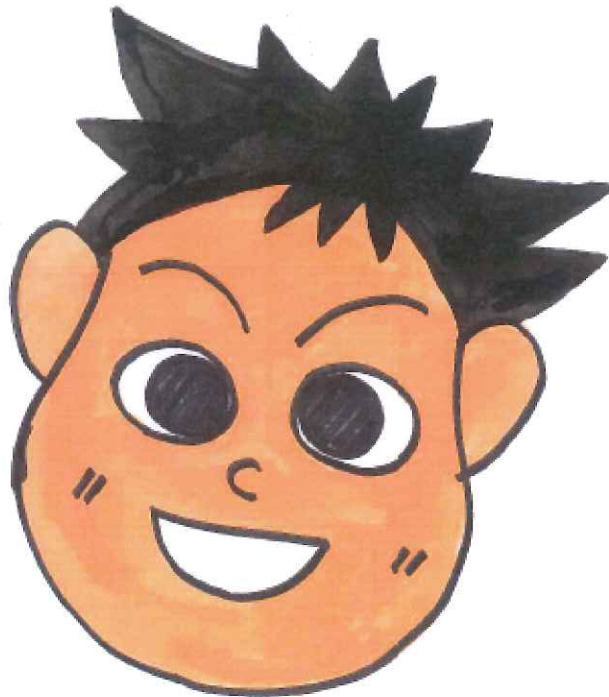
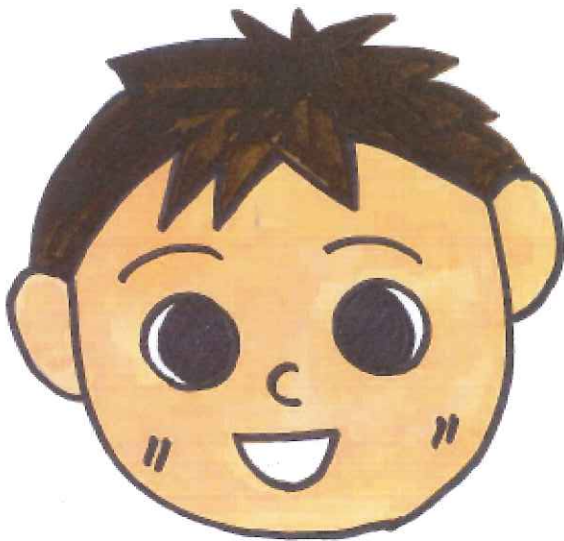
I wonder if rainwater
flows through it.

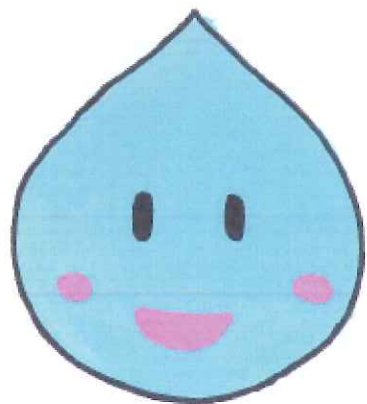


I came to tell you more about Asahidaki
waterfall.

Let's study and take a quiz.

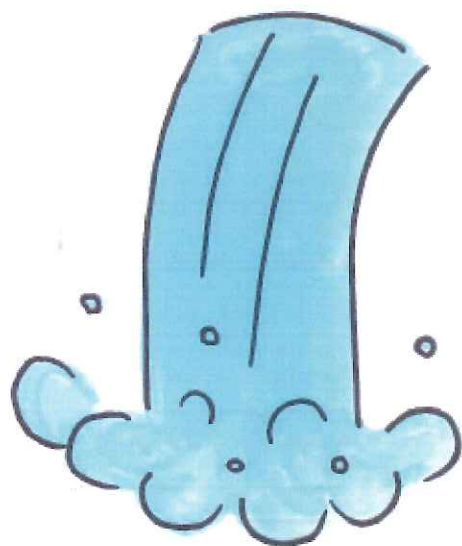
Yes!





Q 1 What is the shape of Asahidaki waterfall?

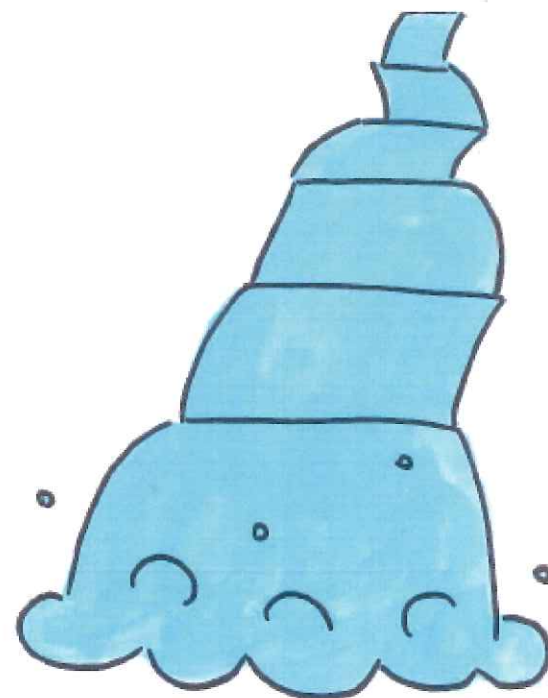
① One step

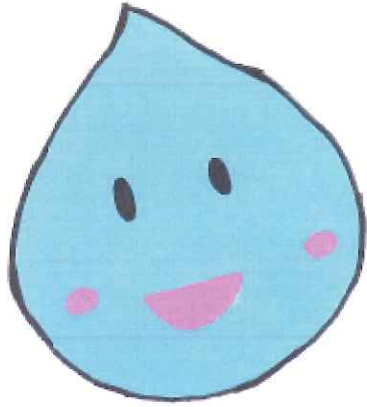


② Three steps

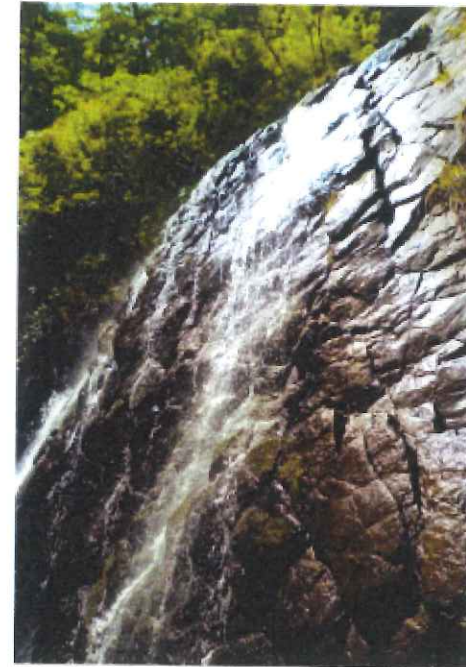


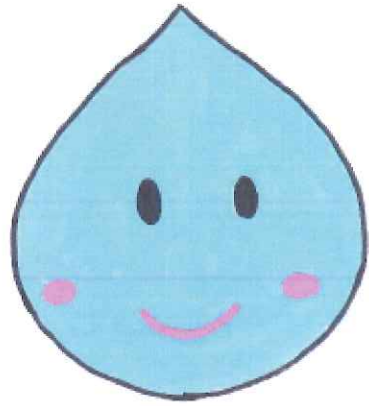
③ Six steps





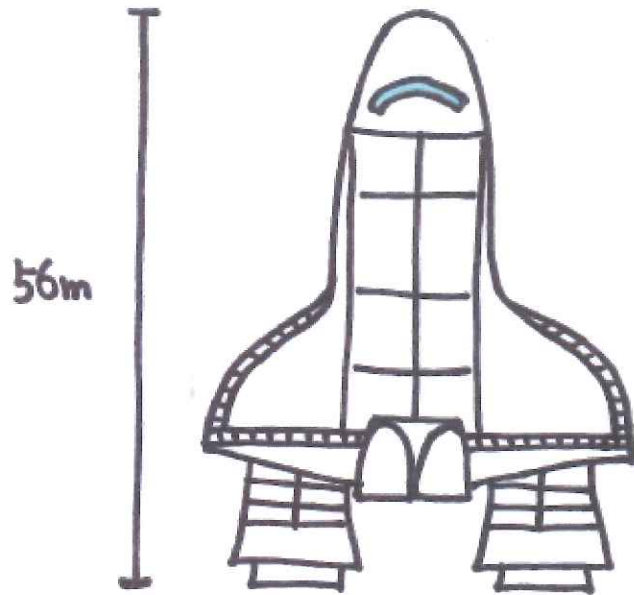
AI The correct answer is No.③.



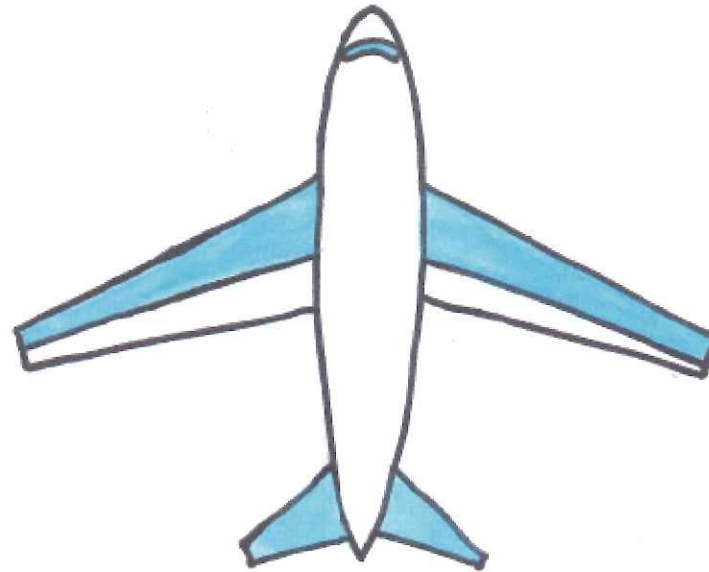


Q 2 How big is the height of the waterfall?

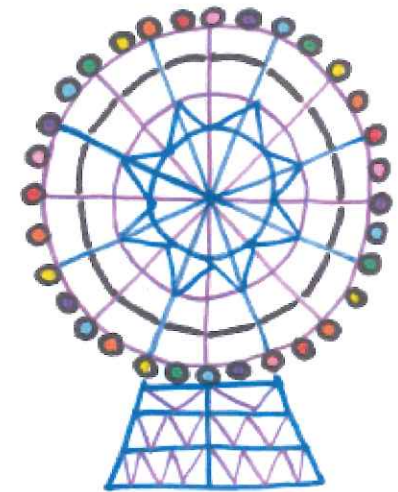
① 56m
(space shuttle)



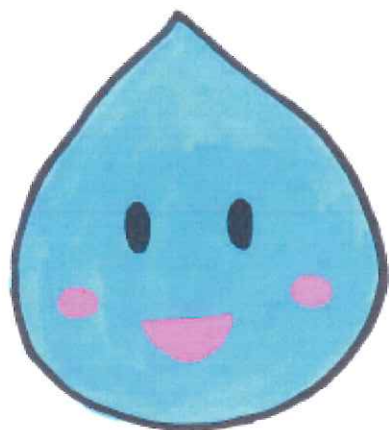
② 80m
(Airbus A380)



111m
③ (Ferris wheel
in Kasai rinkai
park)

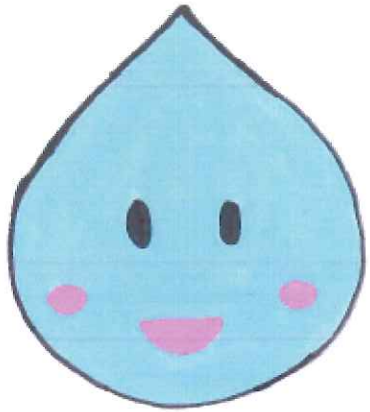


111m

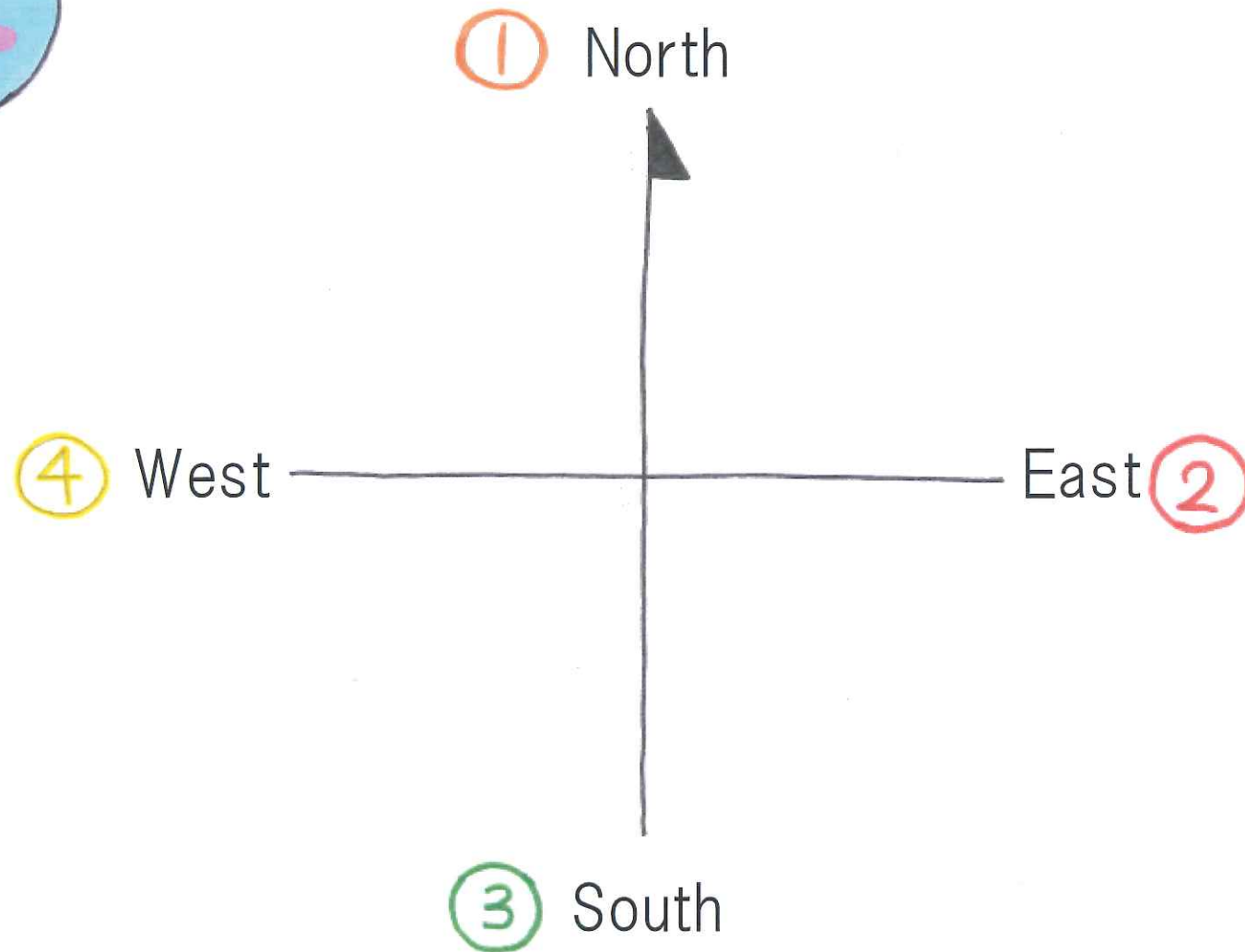


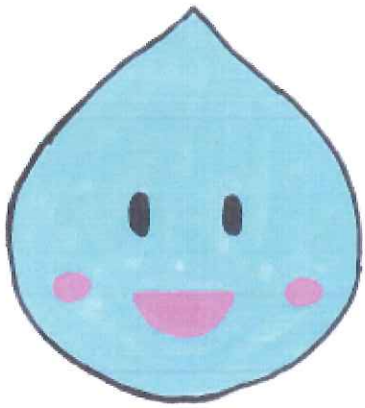
A 2

The correct answer is No.②.
The drop of the waterfall is 80m.
It might be the waterfall with the
biggest drop in the Izu peninsula.



Q 3 Which direction is the waterfall facing?





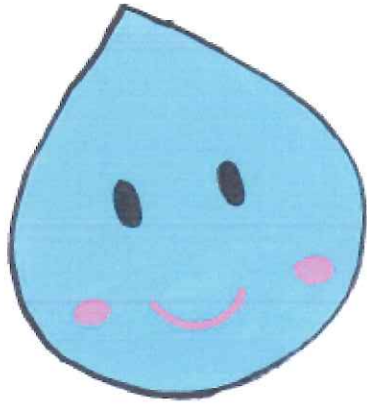
A3

The correct answer is No.②

Asahidaki waterfall is facing east.

The waterfall in the morning sun looks the most beautiful.

So, it came to be called Asahidaki waterfall.



Q4 Where does the water of Asahidaki waterfall come from?

①

Mt. Shiroyama over Shuzenji east primary school

②

Mt. Darumayama over Niji no sato (Nature park)

③

Mt. Amagisan.
It's the source of the Kano River.



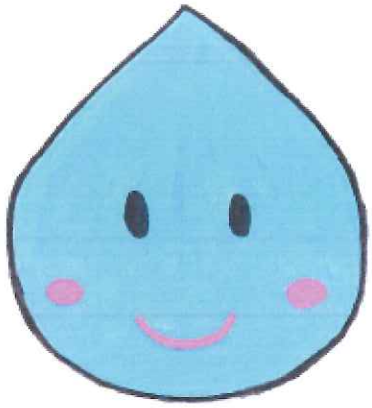
A4

The correct answer is No.②

Mt.Darumayama spring water accumulated and made the pond in Laforest Golf park.

The water flows from the pond to Asahidaki waterfall.

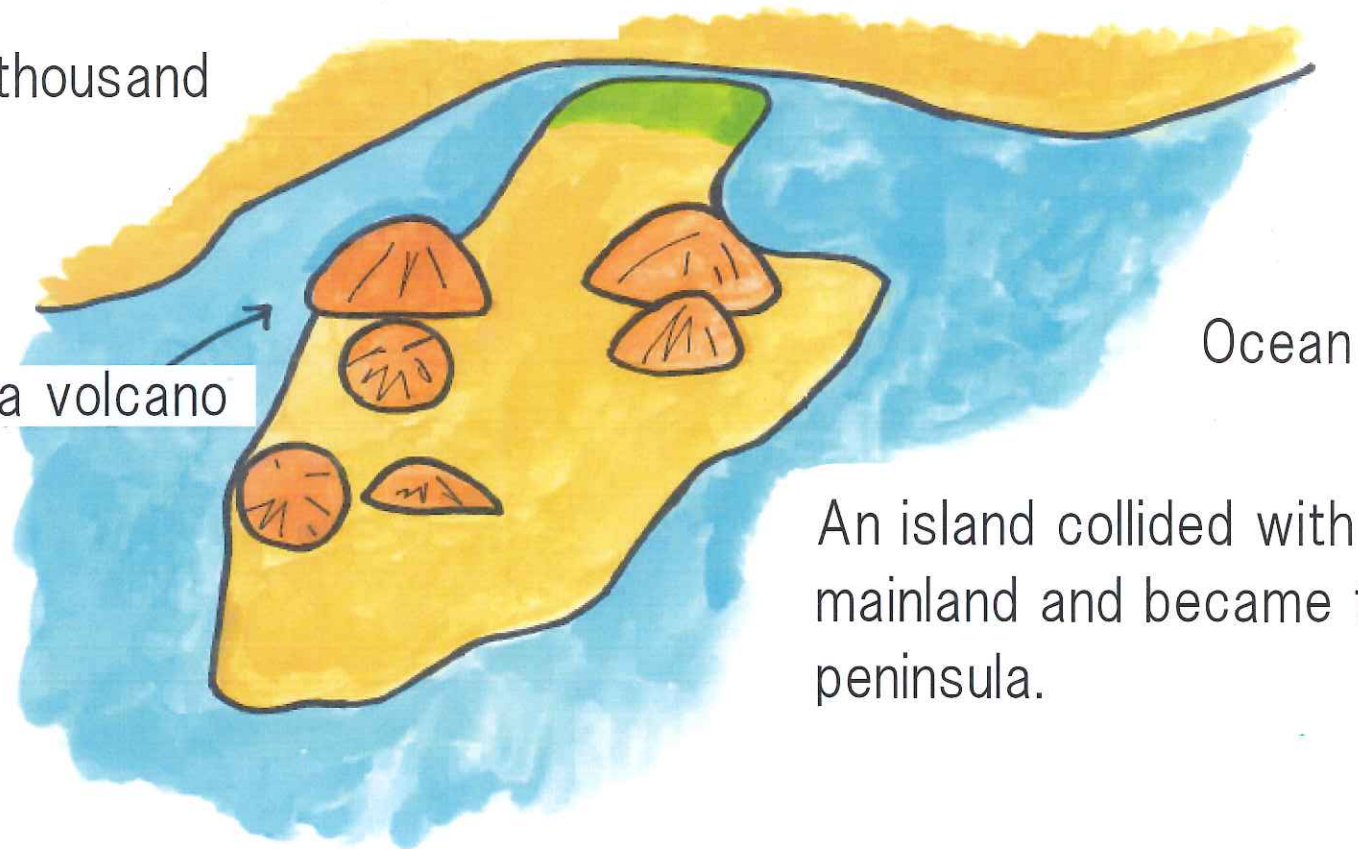
The river flowing from Mt.Darumayama has the Katsuragawa river in Shuzenji hot spring area and the Kakigigawa river, but the water of Asahidaki waterfall is mainly spring water, so the amount of water isn't a lot.



Let's learn how Asahidaki waterfall was made.

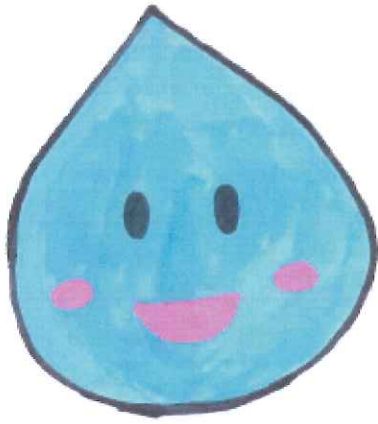
6~2 hundred thousand
years ago

Mt. Darumayama volcano



Ocean

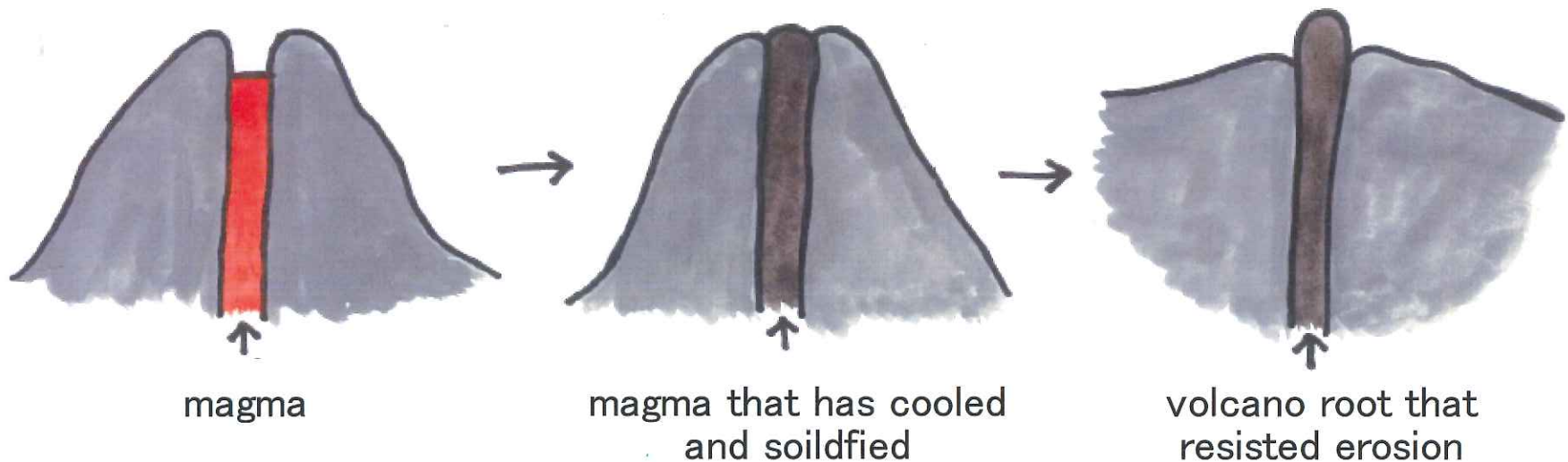
An island collided with Honshu
mainland and became the Izu
peninsula.

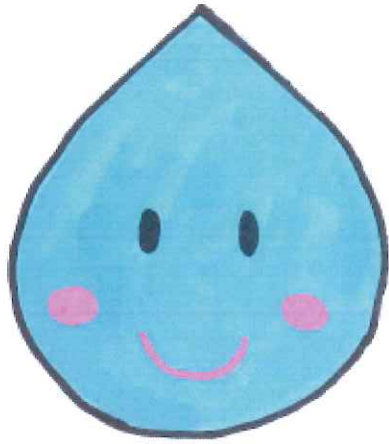


The rocks that create the Asahidaki waterfall were formed hundreds of millions of years ago in the sea.

Hot magma gushes as a submarine volcano tries to erupt.

After that, Izu peninsula and Honshu collided and swelled, causing the underground magma to appear.





When the magma cools down on its side and hardens, it shrinks and forms square, pentagon and hexagon cracks.

It cracks deeper into the back and creates a long pillar.

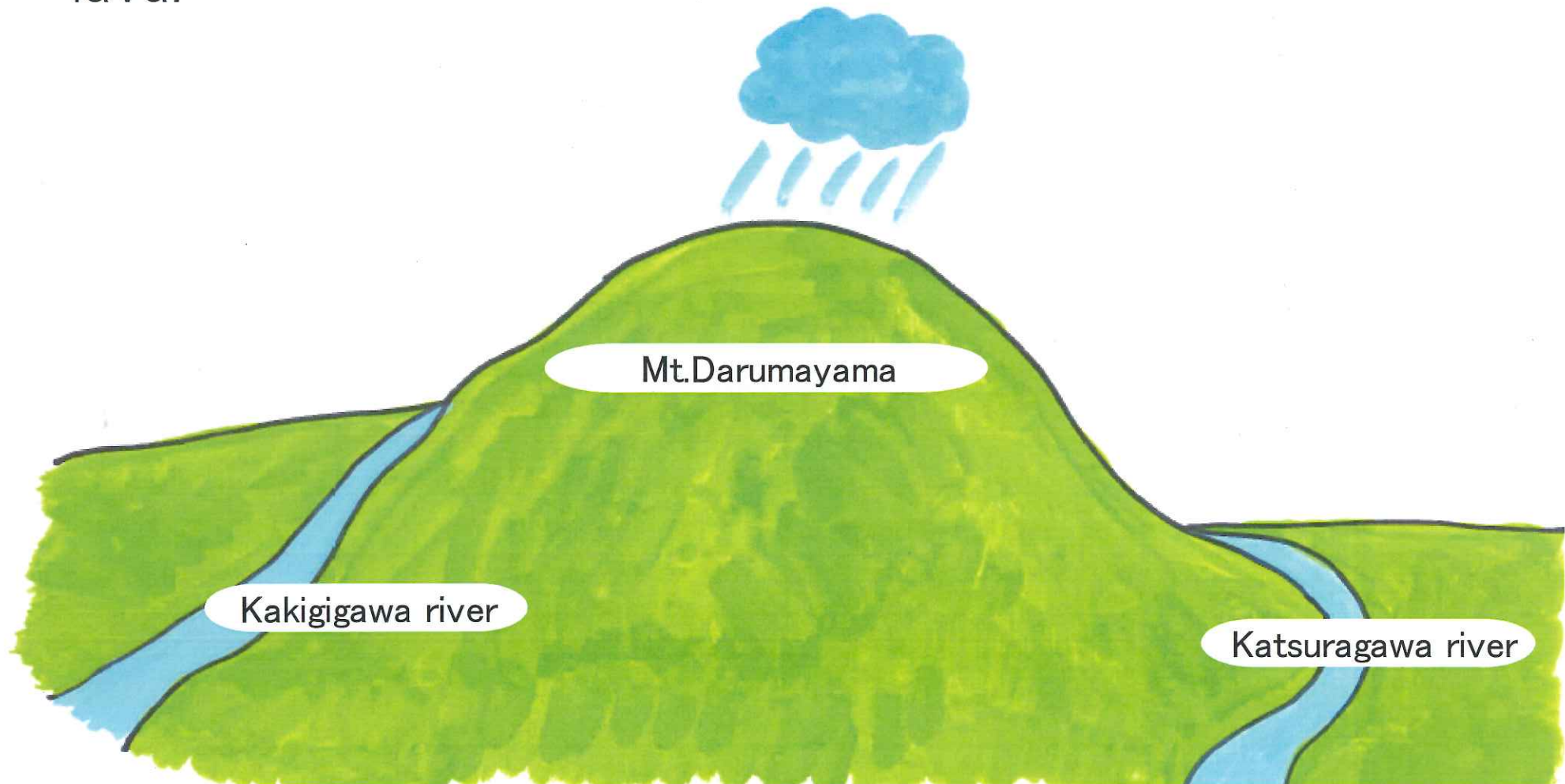
The rock at Asahidaki waterfall is a section of "column joint" made from magma.

You can see the columnar joints lying down around Asahidaki waterfall which is very rare.

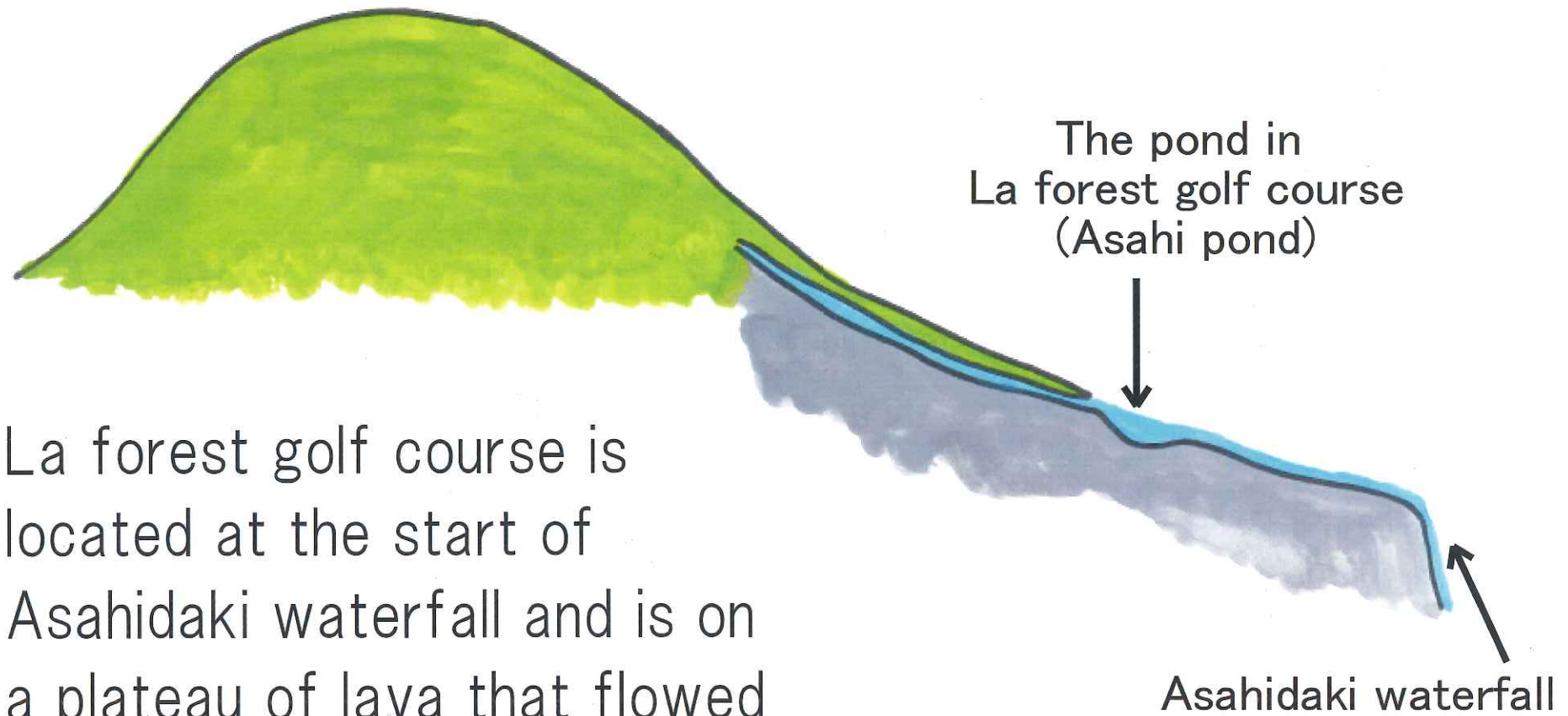


About 6 hundred thousand years ago, the Izu Peninsula was established.

After Mt.Darumayama erupted, the rain that fell on Mt. Darumayama created a river along a valley made of lava.

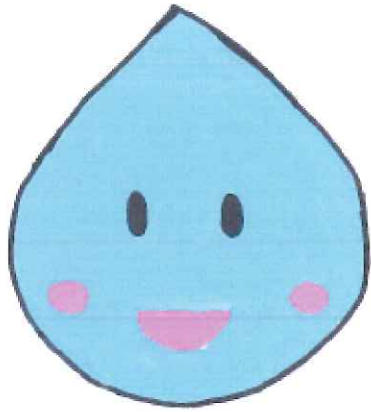


Mt.Darumayama



La forest golf course is located at the start of Asahidaki waterfall and is on a plateau of lava that flowed from Mt.Darumayama.

A spring water pond was created in the hollow, and the water that flowed out of the pond created Asahidaki waterfall.



Do you all understand Asahidaki waterfall now?
Asahidaki waterfall was created by mother nature
over a long period of millions of years.
I hope that everyone will continue to protect
this beautiful waterfall in the years to come.

Yes!

Yeah, let's go!



I became a Asahidaki waterfall
(geoscience) doctor.

Let's go to the
Asahidaki waterfall
from now on.



Asahidaki waterfall
is amazing.

Let's go!



I want to tell everyone.